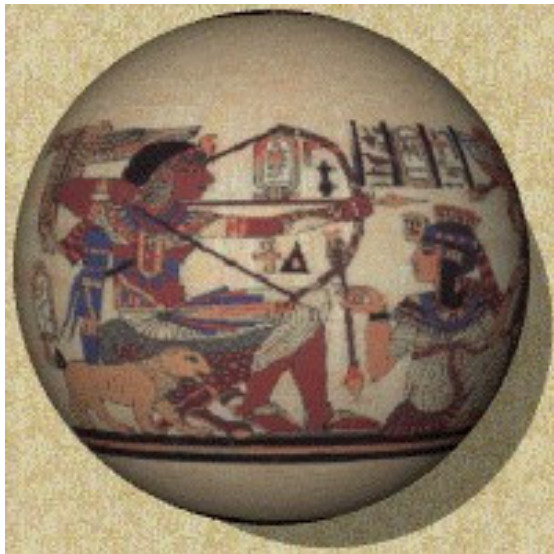


# Egypt

visiting  
**Cairo, Aswan, Luxor,  
Abu Simbel &  
Alexandria**  
featuring  
a CRUISE ON  
THE NILE RIVER



October 28-November 7, 2010

## Egypt

“Where history began and continues.”

The mysterious Sphinx; the incredible Pyramids of Giza; Thebes, the city of a thousand Gates with its magnificent Temples of Luxor and Karnak & glorious Tombs; the sprawling, bustling city of Cairo - rich with medieval splendor, graceful minarets and a wonderful timeless bazaar; smiling friendly people everywhere... All of this and more is Egypt!

Travel with E-Z Tours to this exotic land filled with ancient wonders.

Join us when we journey to Egypt.

**FINAL PAYMENT DUE  
SEPTEMBER 1, 2010**

### Questions?

**E-Z Tours (914) 934-2116**

or

**info@E-ZTours.com**



### MAKE CHECKS PAYABLE AND MAIL TO:

**E-Z Tours, Inc.**

**149 Westchester Ave Ste G2**

**Port Chester, NY 10573-4565**

### Final Payment due September 1, 2010

Not necessary to follow payment plan if initial deposit is made to reserve space and balance is paid in full by 9/1/10

Upon receipt of deposit, helpful information will be sent to each participant, as well as insurance brochures.

## Itinerary

**Thu. Oct. 28** ■ Depart NYC via EgyptAir Airlines at 6:30pm.

**Fri. Oct. 29** ■ Arrive Cairo International Airport, transfer to hotel. Evening Welcome dinner.

**Sat. Oct. 30** ■ Visit the ancient capital of Egypt at Memphis, the Step Pyramid and the Tombs of Sakkara. After lunch, visit the Great Pyramids of Giza, the Sphinx and the Valley Temple.

**Sun. Oct. 31** ■ Visit the Egyptian Museum, Hanging Church, Abu Serga Church and Ben Ezra Synagogue. After lunch, visit the Citadel, the Alabaster & Sultan Hassan Mosques and the Khan el Khalili Bazaar.

This evening transfer to Railway station to board your deluxe sleeper train to Luxor. Taking the sleeping train through the Nile Valley today is more than a historical journey; it's by many considered a very pleasant way to travel! The private sleeper compartments provide comfortable, fully air conditioned accommodation with washing-basin, razor plugs, soap & towels. On top of the door a luggage compartment is available. Dinner on train.

**Mon. Nov. 1** ■ Arrive Luxor and transfer to cruise ship.

**Mon. Nov. 1- Fri. Nov. 5: CRUISE:** On board cruise visiting the Valley of the Kings and Queens, the Colossi of Memnon, the Temples of Karnak, Luxor, Edfu, Kom Ombo and Philae and the Aswan Islands. Including a special visit to the Nubian Village and Nubian Museum.

**Fri. Nov. 5** ■ Exit cruise. Transfer to airport for flight to Abu Simbel. ½ day visit to The Temples of Ramses II and Nefertari. Return flight to Cairo, Transfer to hotel.

**Sat. Nov. 6** ■ Full day tour to Alexandria (by road) visiting Pompey's Pillars, the Catacombs & the Greco-Roman Museum.

**Sun. Nov. 7** ■ Transfer to the airport for departure on EgyptAir flight to New York arriving at 3:15pm.

WHOLESALE: • E-Z TOURS (914) 934-2116 • www.E-ZTours.com

**DOCUMENTS REQUIRED:** Valid passport, Egyptian Visa. Passengers are responsible for ascertaining, obtaining and having with them passports, visas and all other required documents. No refunds will be made to passengers whose participation is limited or denied due to failure to process required documents. Details will be mailed upon receipt of initial deposit or call the Egyptian Consulate for entry requirements @ (212) 759-7120.

**DEPOSITS:** Reservations are only considered definite upon receipt of a **\$500.00, per person deposit** by check/money order made payable to E-Z TOURS. Reservation coupon must be signed. There is no due date for deposits, however space is limited. Reservations will be confirmed on a first-come-first-served basis. All deposits must be paid by check or money order only. **Payment of deposit signifies full acceptance of terms and conditions set forth in this brochure.**

**FINAL PAYMENT:** Final payment due **September 1, 2010**. Final payment must include airline taxes that are not included in the tour rate. A late fee of \$100.00 will be levied for any tour not paid in full by **Sept. 1, 2010**. If payment is not received in full by September, 15, 2009 (including all taxes & any applicable late fees) E-Z Tours will assume cancellation due to non-payment. If a check is returned from bank for any reason there is a \$50.00 fee. **Mail payments to: E-Z Tours; 149 Westchester Ave Ste G2; Port Chester, NY 10573-4565.** All rates in U. S. Dollars.

**CREDIT CARDS:** Credit cards are not accepted by our suppliers and in our efforts to keep rates as low as possible and to avoid charges that add cost to our product the rates reflected in this brochure are not inclusive of surcharges charged by credit card companies. If you would like to pay by credit card, a 5% surcharge will be levied. Please call this office.

**CANCELLATIONS:** A fee of \$150.00 per person will be levied for all cancellations received prior to 91 days before departure date. Cancellations received 90-61 days prior to departure will be levied \$1000.00. There will be no refunds given for cancellations received 60-0 days prior to departure. **No refunds due to tax surcharge increases.** Refunds will not be given in the case of air transportation tax increases. Refunds are only processed upon receipt of a written request, the postmark of which determines date of cancellation. If payment is not received in full by September 15, 2010 (including any applicable late fees) E-Z Tours will assume cancellation due to non-payment.

**OCCUPANCY:** Double occupancy is per person with 2 adults sharing a room; Single occupancy is per person with just 1 adult in a room; Child, is per child, aged 2-11 years old sharing a room with either 2 adults who are each paying the double rate or 1 adult who is paying the single rate. Child rates available upon request. Triple rates not available.

**INSURANCE:** Trip cancellation, health, accident, and baggage insurance is highly recommended. Brochures will be forwarded upon receipt of initial deposit. E-Z Tours will not issue refunds for trip cancellation/interruption due to any reason including sickness, injury, death, medical emergencies, natural disasters, act of God, acts of terrorism, political unrest or accidents.

**RATES:** Rates in this brochure are based on group travel.

**AIRLINE:** EgyptAir Airlines (MS) reserves the right to change equipment or schedule. Passengers shall release and waive any claim against airline regarding cancellations and/or schedule changes. No circle trips, additional stopovers or open jaws permitted. Business class surcharge is currently \$2187.00 per person.

**UNUSED FEATURES:** There is absolutely no refund for any unused portions of the included package features unless canceled by the WHOLESALE.

**TOURS:** Included as listed. An English-speaking guide escorts all tours. There will be a local ground operator to assist with optional tours.

**HOTELS:** Rooms/cabins/sleeper based on "run-of-house" accommodations. If changes occur for any reason, E-Z Tours will substitute hotels of similar category.

**NOT INCLUDED:** Air transportation taxes, security fees or fuel surcharges (currently used \$291.00). Current taxes listed are subject to change. Taxes are affected by fuel surcharges and increase at the discretion of the airline. Drinks during meals at hotel/cruise, meals other than when specifically mentioned, all excess, oversize, and/or overweight baggage fees, all items of a personal nature, and all items not specifically mentioned in this agreement under "included in tour price".


**RESPONSIBILITY:** E-Z Tours, Inc. and/or its agents act only as an agent to the passenger in all matters relating to travel and for the various companies over the lines of which tickets are available and these tours operate, and as such, assume no responsibility for any delay, change in schedule, loss, injury and damage to, or in the respect of, any person or property, however caused, or arising in connection with, the service of any trains, vehicles, carriages, aircraft, or other conveyances or hotel which may be used, whether wholly or in part, in the performance of its duty of the passenger. The airlines concerned are not to be held responsible for any act, omission, or event during the time the passenger is not on board their plane on conveyance. The passenger contract, in use by the airline concerned, when issued, shall constitute the sole contract between the airline and the purchaser of this tour. The right to substitute any tour in this program at any time, and to make changes/alterations in the itineraries, hotels or sightseeing as may be found desirable for the convenience of the tour and the proper execution of the tour is specifically reserved by Wholesaler.

# Egypt


Thursday, October 28 - Sunday, November 7, 2010

## TOUR PRICES

Tour Prices Are Per Person

**Double Occupancy** per person 2 adults 1 room **\$2595.00** 

**Single Occupancy** per person, 1 adult 1 room **\$3050.00** 

 Rates quoted in US dollars. Rates do not include air transportation taxes, security fees or fuel surcharges. Currently, taxes are \$291.00; please plan to add this to the above rates. Updated information will be sent in August 2010.

## INCLUDED IN TOUR PRICES

Air transportation, in economy class, via Egyptair Airlines.  
Depart from and return to JFK Airport.

Meet and Greet upon arrival in Cairo.

Air transportation Aswan-Abu Simbel-Cairo.

1 night deluxe sleeper train (wagon lit) from Cairo to Luxor  
with dinner and breakfast included.

All airport/train/cruise transfers throughout tour.

Breakfast daily throughout tour.

4 nights' accommodations @ **SHEPHARD HOTEL** in Cairo.

Welcome dinner with entertainment upon arrival.

1/2 day escorted morning tour of the ancient capital of Egypt  
at Memphis, the Step Pyramid and the Tombs of Sakkara.

1/2 day escorted afternoon tour of the Great Pyramids of  
Giza, the Sphinx and the Valley Temple.

1/2 day escorted visit to the Egyptian Museum, the Hanging  
Church, Abu Serga Church and Ben Ezra Synagogue.

1/2 day escorted afternoon tour of the Citadel, the Alabaster  
and Sultan Hassan Mosques and the Khan El Khalili Bazaar.

4 nights' accommodations aboard the **NEPHTIS NILE CRUISE**  
with breakfast, lunch and dinner daily. Includes daily  
sightseeing at various stops between Luxor & Aswan.

Special escorted visit to the Nubian Village and Nubian  
Museum

Full day tour with lunch to Alexandria.

All tours are escorted and include entrance fees.

Hotel taxes included.

**Final Payment due September 1, 2010**

**Egypt · October 28-November 7, 2010**

Enclosed is my deposit (\$500.00 per person) for the 2010 Egypt Tour. Make checks payable to E-Z Tours, Inc.. **Final payment due by September 1, 2010.** All cancellation penalties apply!

NAME(S) \_\_\_\_\_  I prefer single  I prefer double

DAY TEL#: \_\_\_\_\_ ▶ EVE TEL#: \_\_\_\_\_

ADDRESS: \_\_\_\_\_ ▶ EMAIL: \_\_\_\_\_

I have no roommate. Give my information to another person traveling who wants to share. If a roommate is not found or cancels, I will pay single rate.

I have roommate. If my roommate cancels, I will be responsible for single supplement. My roommate is: \_\_\_\_\_

Special Meal Requirements:  vegetarian  chicken and fish  no seafood  vegan (no meat, fish, poultry or dairy)

*I/We, the tour participant(s) have read the General Terms and Conditions set forth in this brochure and accept the risks therein. Terms are accepted as is. Portions crossed out, marked or amended are invalid and non-binding.*

Signature \_\_\_\_\_ date \_\_\_\_\_